

Single Handle Kitchen Faucet With Side Spray

Model NO.: 815S-CP

815S-BN

815S-ORB

INSTRUCTION

Tools:

- Adjustable Wrench
- Pliers
- Pipe Wrench
- Screwdriver
- Teflon Tape
- 1 3/8" Basin Wrench or
- 1 11/32" Shower Valve Socket Wrench



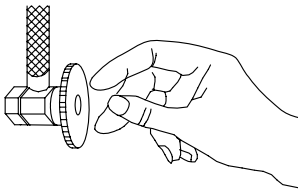
Maintenance:

Your new kitchen faucet is designed for years of trouble-free performance.

Keep it looking new by cleaning it periodically with a soft cloth. Avoid abrasive cleaners, steel wool and harsh chemicals as these will dull the finish and void your warranty.

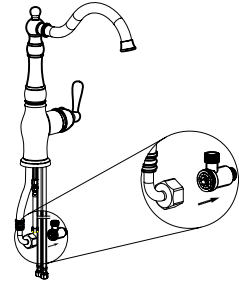
Preparation / Assembly

1



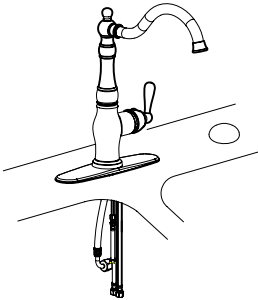
Shut off water supplies. Remove old faucet. Clean sink surface in preparation for new faucet.

2



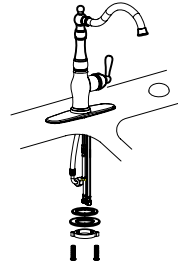
Remove T-Tube from the Inlet hose with adjustable wrench.

3



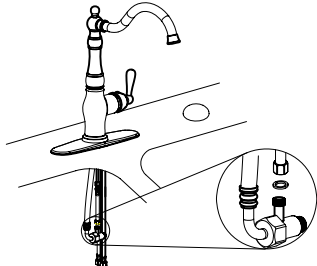
Place optional Escutcheon and Base Plate on bottom of new faucet before positioning faucet through mounting hole.

4



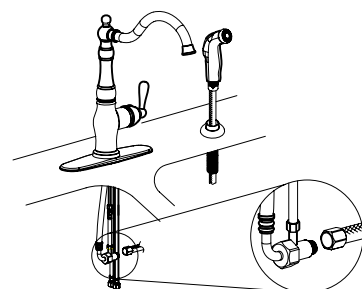
Open the package of mounting kit. Remove the 2 screws from locking nut. From under the sink, install the rubber washer, steel washer, and locking nut onto the shank. Tighten the locking nut with a basin wrench or socket tool and install the 2 screws to secure the faucet in place.

5

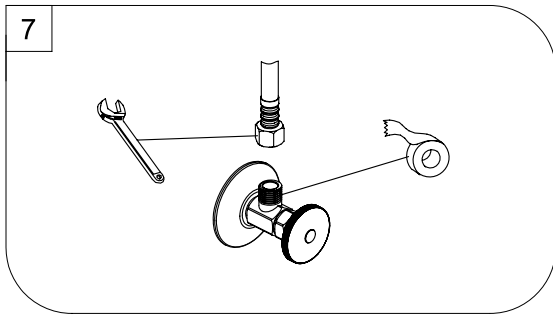


Connect the inlet hose and T-tube left threads (1/2 IPS) with wrench. Then connect the other end of connector hose to the top threads of T-tube with wrench, ensure the washer is in place. Do not overtighten.

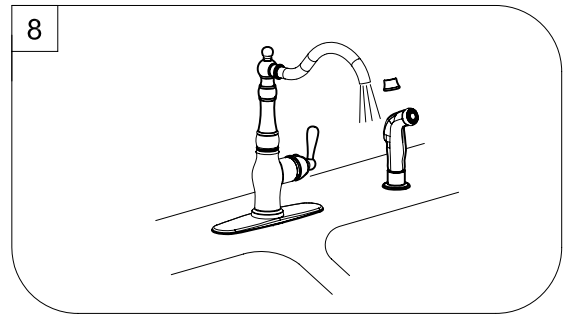
6



Mount side spray support in far right hole in sink. Insert spray hose down through the support. Attach spray hose to T-tube right threads with wrench.



Apply pipe tape onto threads of water supplies.
Use wrench when tightening the hose connection, do not overtighten.



Important: After installation is completed. Turn on water supply and allow both hot and cold water to run for at least one minute each. While water is running, check for leaks.

Exploded Drawing RP(Replacement Parts)

Model NO.: 815S-CP
815S-BN
815S-ORB

